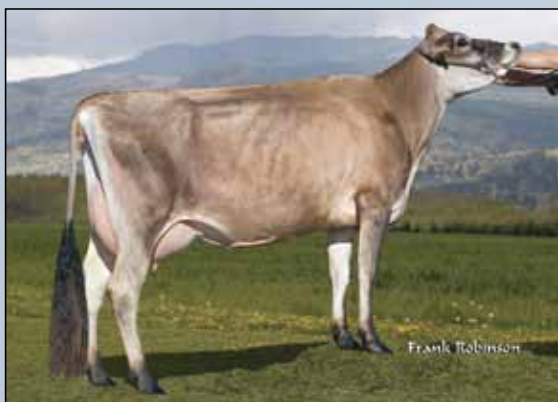




Wilsonview Access Jadis VG-85%

the inception of genomics and is a mainstay near the top of the Jersey genomic list. Lotto is the highest Jersey bull available for LCM\$ at +631 (Roy is number two at +626 LCM\$). Lotto is also high ranking for PL at +5.1 and DPR at +0.8 with a low SCS of +2.71. Lotto has been a highly sought-after young bull since his semen was released. His young heifer calves have been selling well across the U.S. this past year.



Valley Oaks Alexanders Wedding-P EX-90%

Our other GeneFORCE Jersey sire, 014JE00533 All Lynns Restore Vito-ET, ranks among the top ten genomic young sires of the Jersey breed for JPI at +182. Vito is the highest available sire for protein production at an astounding +54 PTAP. Vito is also the highest milk sire available at +1905 PTAM.

Adding to the depth of the PACE program, another recent release, 014JE00553 O.F. Impuls Hancock, brings production and extreme outcross opportunities. Hancock is +60 fat and +28 protein. However, the most impressive aspect of this Impuls son out of a Maximus dam is his phenomenally low 2.1 percent genomic EFI. No bull in the breed at or even remotely near Hancock for genomic JPI can come close to his outcross ability.

Along with the impressive group of genomic young sires, the rest of Accelerated Genetics' Jersey proven sires creates a strong line-up.

014JE00472 Forest Glen Artist Alexander is sire that can offer high components and outcross capabilities. An Artist son from an VG-88% Bold dam, Alexander is a true component improver at +.15 percent fat and +.04 percent protein. He has over 100 daughters in his production proof and is among the top of the breed for LCM\$. Alexander's daughters are moderate sized with very correct feet and leg structure and are extremely shallow uddered at +1.6 for udder depth. Alexander makes

a good cross on Dale, Rebel, Abe and Jevon daughters.

Two of the higher production Action sons available are 014JE00483 Ahlem Action Access and 014JE00484 Calamitys Action Campbell-ET. Access is among the top 15 bulls available for improving milk production at +1038 PTAM. He is out of an VG-88% Hallmark and is Accelerated Genetics' highest sire for type at +1.4 PTAT. Access' daughters are tall and dairy with outstanding udders.

Campbell is also out of a Hallmark dam and sires impressive dairy frames along with shallow udders, snug fore udders and high and wide rear udders. He has nearly 150 daughters in his production proof and is a milk improver at +786 PTAM.

Other notable proven sires include 014JE00460 Ahlem Jace Epic-ET, a Jace son that sires very high components and a nice balanced linear. Also, 014JE00415 Raline Paramount Peter is a bull with a nice linear pattern and sires solid production.

As you can see, many breed-leading proven and genomic young sires for total performance call Accelerated Genetics 'home'. It's quite impressive for our PACE program to have graduated so many top available JPI bulls. Take advantage of these genetics, and put these Jersey sires to work in your herd's mating program.



FDB Campbell Joanne VG-85%



Nymans Epic 7955 VG-81%

RECENT SALE HIGHLIGHTS

HESSENS ZUKUNFT, GERMANY

€57,000 Skye
Man-O-Man x UFM-Dubs Shottle Sheray
Highest German sale price ever!

K&L SELECTION SALE, THE NETHERLANDS

€37,500 Apina Fleur
Man-O-Man x Ralma Mac Beauty VG-87
Record-breaking high seller!

SEMEX SPECTACULAR SALE, AUSTRALIA

\$32,000^{AUS} M-Gee Silk
Man-O-Man x Misty-Springs Shottle Satin
Top price at the sale!

ALL-AMERICAN JERSEY SALE, U.S.A.

\$32,000 Tollenaars Lotto Lottery 1046C96-ET
Young bull, Lotto x VG-88% Impuls

TOP-GENETIK-AUKTION, GERMANY

€11,500 KNS Monamie
Man-O-Man x Sharky