

PACE

PROGRESSIVE ACTION THROUGH COOPERATIVE EFFORTS

Accelerated Genetics[®]



Why PACE?

Through Accelerated's PACE program YOU can get the BEST FUTURE GENETICS, TODAY...

- ✓ Unbiased pedigree source
- ✓ Selection criteria continually evolving
- ✓ Genetic Marker assisted selection
- ✓ Selecting for future market trends

What you'll receive...

- ✓ Accelerated genetic levels in your herd
- ✓ Paid to use the best future genetics
- ✓ The industries' best graduation rate
- ✓ High reliability young sire graduates
- ✓ Early daughters on newly proven sires

They're all talking about PACE...

"IT'S EXCITING TO SEE THE NEW GENETICS AND BEING ON THE LEADING EDGE."



"We have achieved 100% accuracy in our identification program. It is important for us to know exactly what we put into our cows from feeding to breeding. Because of the positive results we've seen in our PACE daughters, we've gone back and used some of these same sires once they've become proven, such as 014H002759 Burke, 014H003099 Tyco, 014H003154 Virgo and 014H002586 Sailor. It's exciting to see the new genetics and being on the leading edge. I love seeing the new calves coming out of these heifers!"

- Jason Weisenbeck

Burnside Acres, Durand, WI



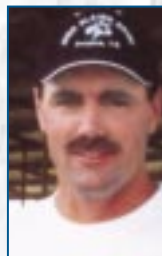
"Having first-crop daughters on top new release sires is always exciting and increases merchandising possibilities. We're very satisfied with the genetic diversity Accelerated Genetics has to offer."

- Jon Tollenaar

Tollenaar Holsteins, Elk Grove, CA

"WE ARE VERY SATISFIED WITH THE GENETIC DIVERSITY ACCELERATED GENETICS HAS TO OFFER."

"I have been using PACE for eleven years and have some really good daughters. I'm very excited about using the young sires in this program. I like the way the credits are done because the Accelerated Genetics PACE program pays better than competitors' programs."



- Harry DeWit

High Plains Dairy, Friona, TX

"We choose Accelerated Genetics' PACE program because of their way of selecting bulls. We like knowing that Genetic Markers are used to give us the best genetics possible. We also like the fact that Accelerated has a higher return of bull to the active line-up in proportion to those sampled."

- Carston Pank, Sprakers, NY

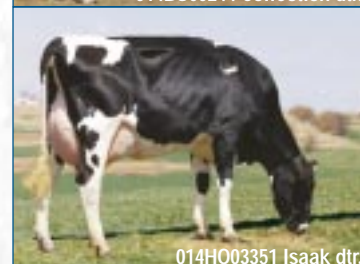
Only made possible through Accelerated Genetics' PACE program.



014H002958 Dutch Boy dtr.



014BS00244 Collection dtr.



014H003351 Isaak dtr.

Here's how it works...

PACE semen is randomly distributed across the United States in order to test each bull's ability to transmit type and production in various management environments. Accelerated Genetics' goal is to distribute a minimum of 2000 units of each PACE sire.

It's as easy as ...

- 1 You keep accurate animal identification.
- 2 You record bulk tank weights.
- 3 You turn in the calving ease records.



Help Identify Elite Genetics and Receive Credits for Doing it!

1. Increase your genetic progress by using the latest production and type pedigrees.
2. Receive PACE semen at an exceptional value.
3. A \$5.00 credit for calving ease information (male and female) on calves from PACE sires born within 15 months of PACE sire's allocation date.
4. FREE classification for PACE daughters plus appropriate number of herdmates.
5. BEAD (Bull Evaluation and Daughter List) credit determined by USDA weighting factor. (See chart at left.) Credit is given for daughters that are listed within 48 months from the PACE sire's allocation date. Limit to ten daughters per bull per herd. Limited to the first 125 daughters freshened of any particular PACE sire.

Weighting and credits for each milking PACE daughter, properly identified and appearing on her sire's proof 48 months after his allocated sampling date.

<u>No. of Test</u>	<u>Supervised Tests</u>		<u>Unsupervised Tests</u>	
	<u>Weight</u>	<u>\$Paid</u>	<u>Weight</u>	<u>\$Paid</u>
1	.40	\$22	.30	\$16
2	.51	\$28	.38	\$21
3	.60	\$33	.45	\$25
4	.69	\$38	.52	\$28
5	.76	\$42	.57	\$31
6	.83	\$46	.62	\$34
7	.90	\$49	.68	\$37
8	.95	\$52	.71	\$39
9	.99	\$54	.74	\$41
10	1.00	\$55	.75	\$41

These benefits, combined with the top quality PACE sires available, create a program suitable for progressive dairy producers throughout the U.S.

Does your herd qualify?

Requirements...

1. To enroll in the PACE program, your herd must be on official DHI test.
2. With DHI, **properly identify all daughters** with unique registration number, American ID number, state series vaccination or DHI number, her birthdate along with her sire's NAAB or registration number.
3. Submit calving ease information on all calves born to DHI. All females born must be identified.
4. Owner agrees to make animals available for photos, classification, and tours.
5. Owner agrees to use PACE sire within four months of delivery.



HERD INFORMATION

DHI Herd Code _____ -- _____ -- _____ Breed (Circle One) H G J B R

Name _____

Address _____ City _____

State _____ Zip _____ Telephone No. () _____ No. Cows _____

Accelerated Genetics Delivery Person _____

Current Rolling Herd Average in Pounds: _____ M _____ F _____ P

_____ % of Cows Identified with DHI _____ % of Sires Identified with DHI.

Check

_____ Yes, I am interested in more information about PACE.

_____ Please have an Accelerated Genetics representative contact me.

***Secure your future through efforts today –
That's what the PACE program is all about.
Set the PACE by becoming a part of this
Accelerated Genetics program.***



80142