



2011 Montbeliarde & Normande Sires



photo © giorgio soldi

Distributed in the U.S. by:

Accelerated Genetics®



800.451.9275 • www.accelgen.com

Innovate. Diversify. Strengthen.

Include Normande and Montbeliarde genetics in your breeding program.

ROYAL HOLL



180NM00012 ROYAL HOLL
 Reg. No. FRA6114595144
 Birth Date: 2000
 NORMANDE BREED



Royal Holl Toscanie




Royal Holl T'Esabelle

Sire: Hollydays (Armenia x Cagnotte)
 Diametre
 Dam: Longitude
 Impression
 Vazolla

Exceptional Udders
Very High Components
Excellent Calving Ease

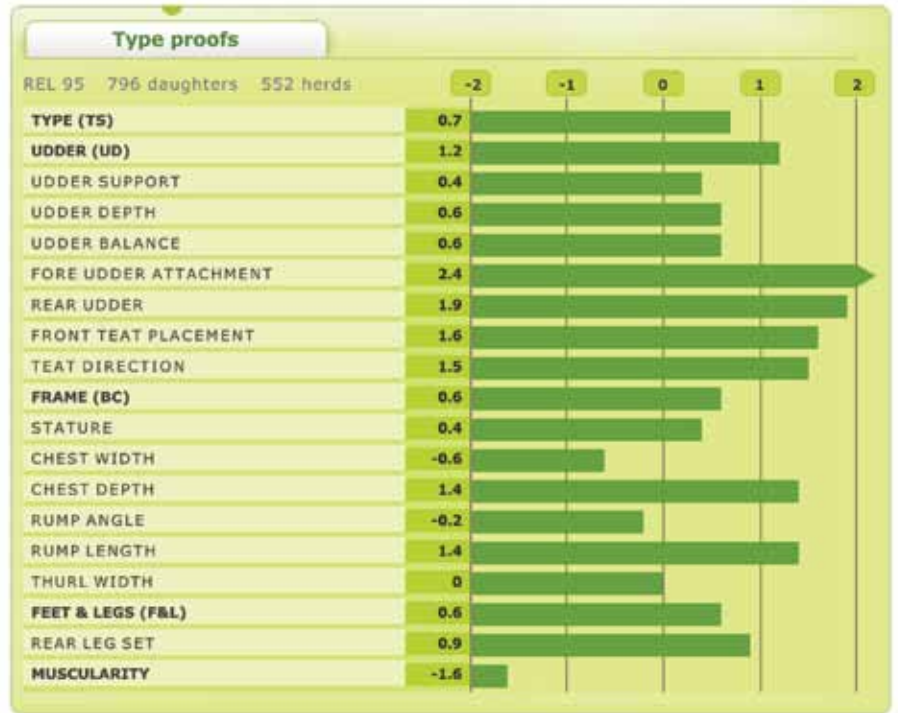


Nomande/French Genetics
www.frenchgenetics.com
www.normandegenetics.com

Distributed in the U.S. by:
Accelerated Genetics®

 800.451.9275 • www.accelgen.com

Production proofs	
REL 95	3325 daughters 2140 herds
ECONOMICAL DAIRY INDEX (INEL)	40
PROTEIN KG	28
FAT KG	39
PROTEIN RATE %/100 (P)	3.1
FAT RATE %/100 (F)	4.1
MILK KG (LAIT)	253

Functional proofs	
MILKING SPEED (MS)	-0.1
SOMATIC CELLS (CBL)	0.7
LONGEVITY (LGV)	0.6
FERTILITY COWS (FERC)	1
FERTILITY HEIFERS (FERH)	1.1
BIRTH VITALITY (BVI)	94
CALVING VITALITY (CVI)	94
CALVING EASE (CE)	92
CALVING ABILITIES (CA)	91



REDONDO



020NM00012 REDONDO
Reg. No. FRA4427295565
Birth Date: 2000
NORMANDE BREED



Redondo Brocante



Redondo Talence

Sire: Holgura (Vico x Capucine)
Diametre
Dam: Littoral
Huche
Valabri

High TPI
Great Longevity
Strong Rear Udder Attachment



Nomande/French Genetics
www.frenchgenetics.com
www.normandegenetics.com

Distributed in the U.S. by:

Accelerated Genetics



800.451.9275 • www.accelgen.com

Production proofs

REL 95 6323 daughters 3213-herds

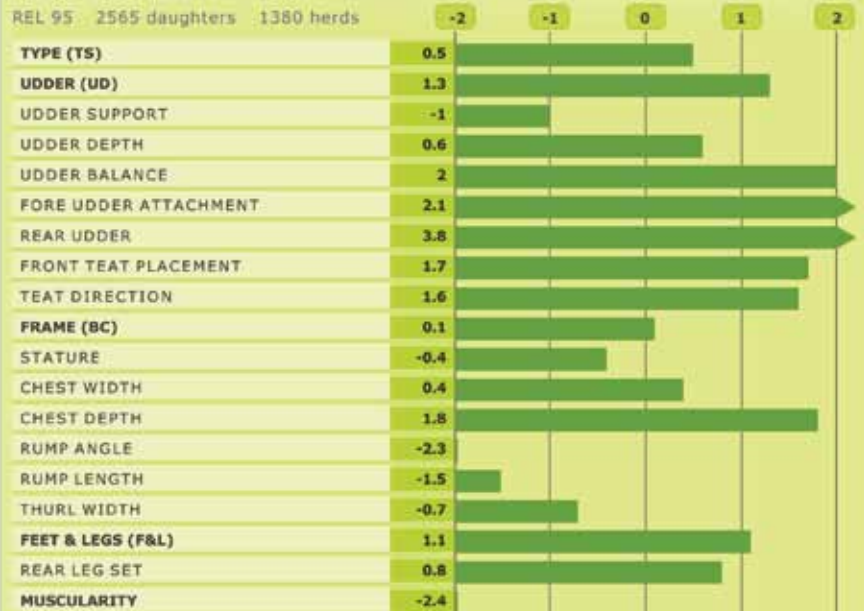
ECONOMICAL DAIRY INDEX (INEL)	39
PROTEIN KG	31
FAT KG	52
PROTEIN RATE %/** (P)	-1.3
FAT RATE %/** (F)	-0.1
MILK KG (LAIT)	1179

Functional proofs

MILKING SPEED (MS)	1
SOMATIC CELLS (CEL)	-0.3
LONGEVITY (LGV)	1.5
FERTILITY COWS (FERC)	0.7
FERTILITY HEIFERS (FERH)	0.9
BIRTH VITALITY (BV1)	92
CALVING VITALITY (CV1)	93
CALVING EASE (CE)	91
CALVING ABILITIES (CA)	88

Type proofs

REL 95 2565 daughters 1380 herds



ONZE JB



217M00014 ONZE JB
 Reg. No. FRA3998006455
 Birth Date: 1998
 MONTBELIARDE BREED



Onze JB Rose

Sire: Faucon (Unau x Coquine)
 Bois Levin
 Dam: 10 Java
 Epee
 Tibet



Onze JB Roulette

Dairy Cows with High Butterfat
Functional Trait Improver
Low Calving Ease



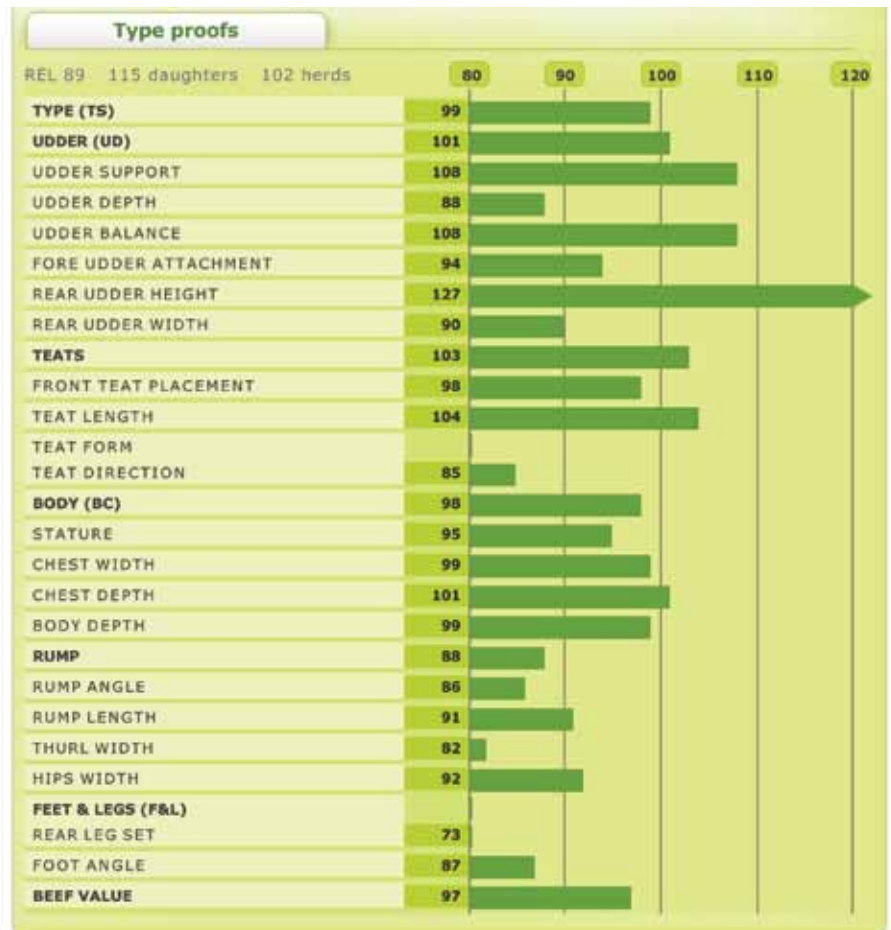
Normande/French Genetics
www.frenchgenetics.com
www.normandegenetics.com

Distributed in the U.S. by:
Accelerated Genetics®

 800.451.9275 • www.accelgen.com

Production proofs	
REL 95	180 daughters 153 herds
ECONOMICAL DAIRY INDEX (INEL)	27
PROTEIN KG	21
FAT KG	34
PROTEIN RATE %/100 (P)	-0.4
FAT RATE %/100 (F)	0.7
MILK KG (LAIT)	692

Functional proofs	
MILKING SPEED (MS)	103
SOMATIC CELLS (SCC)	0.5
LONGEVITY (LGV)	0.3
FERTILITY COWS (FCW)	0.8
FERTILITY HEIFERS (FHH)	1.1
BIRTH VITALITY (BV)	95
CALVING VITALITY (CV)	93
CALVING EASE (CE)	92
CALVING ABILITIES (CA)	91
TEMPERAMENT (TE)	95



VIBRATO JB



217M00020 VIBRATO JB
 Reg. No. FRA2919314605
 Birth Date: 2004
 MONTBELIARDE BREED



Vibrato JB Comtesse

Sire: Oran JB (Ezozo x Limousine)
 Juvisy
 Dam: Santiago
 Pivoine
 Goncourt



Vibrato JB Charmante

Outstanding Udders
Very Good in Functional Traits



Normande/French Genetics
www.frenchgenetics.com
www.normandegenetics.com

Distributed in the U.S. by:

Accelerated Genetics®

800.451.9275 • www.accelgen.com

Production proofs

REL 86 71 daughters 63 herds

ECONOMICAL DAIRY INDEX (INEL)	34
PROTEIN KG	29
FAT KG	26
PROTEIN RATE %/100 (P)	0.1
FAT RATE %/100 (F)	-0.7
MILK KG (LAIT)	824

Functional proofs

MILKING SPEED (MS)	107
SOMATIC CELLS (CEL)	-0.2
LONGEVITY (LGV)	1.3
FERTILITY COWS (FCWC)	0.7
FERTILITY HEIFERS (FERH)	0.7
CALVING EASE (CE)	90
CALVING ABILITIES (CA)	90
TEMPERAMENT (TE)	108

Type proofs

REL 80 58 daughters 54 herds



Understanding French Proofs

All the proofs calculated in France are expressed in genetic standard deviation, in relation to a **rolling value base of 0**.

The **CD** is the **degree of precision of the proof**.

The higher the CD, the more reliable the proof (REL=95, maximum accuracy, the bull has several thousand daughters).

The **ISU** is the reflection of French selection objectives, it is based on 3 major criteria:

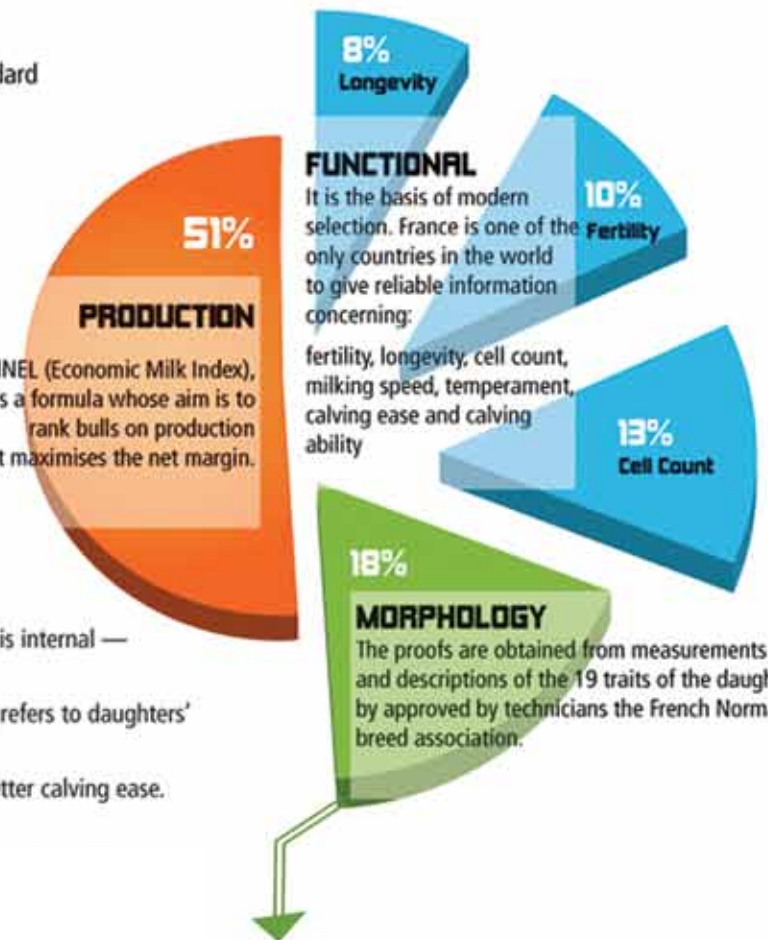
Production, Functionality, Morphology.

$$INEL = 0.98 (Prot + 0,2 Fat + P\% + 0,5 F\%)$$



INEL (Economic Milk Index), is a formula whose aim is to rank bulls on production that maximises the net margin.

- **Rump Angle:** "+" is sloped; **Rear Leg Set:** "+" is posty;
- **Udder Balance:** "+" is high rear quarters; **Teat Direction:** "+" is internal — For all four criteria, "0" is optimum."
- **Functional indexes:** Positive values are desirable for all; Fertility refers to daughters' fertility after calving.
- **Calving Ease and Calving Ability** averages equal 89. 90 is a better calving ease. Calving Ability is the daughters' ability to calve easily."



Udder = 25 % UD + 20 % UB + 20 % US + 15 % FTP + 5 % RUA + 5 % TD + 10 % FUA

- Udder Depth (UD)
- Udder Balance (UB)
- Udder Support (US)
- Fore Udder Attachment (FUA)
- Front Teat Placement (FTP)
- Rear Udder Attachment (RUA)
- Teat Direction (TD)

The 3D pie chart is divided into four segments:

- 45% Udder**
- 15% Feet & Legs** (includes: Rear Leg Set)
- 15% Muscularity** (includes: Rib, Rump, Loin, Round)
- 25% Frame**

Frame = 30 % TW + 25 % CD + 20 % CW + 15 % RL + 10 % ST

- Thurl Width (TW)
- Chest Depth (CD)
- Chest Width (CW)
- Rump Angle (RA)
- Stature (ST)
- Rump Length (RL)

Distributed in the U.S. by:



800.451.9275 • www.accelgen.com